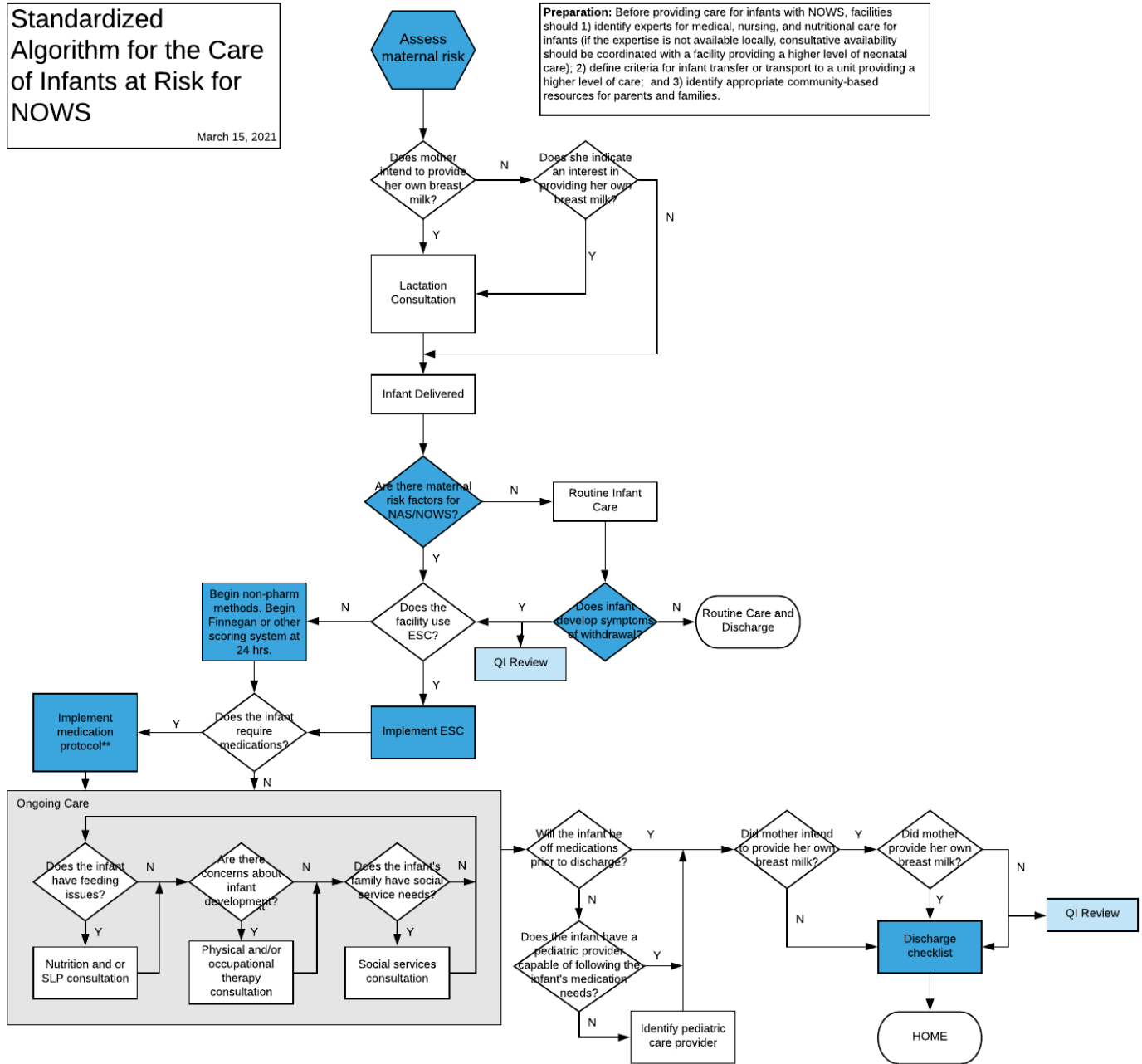


Standardized Algorithm for the Care of Infants at Risk for Nows

March 15, 2021

Preparation: Before providing care for infants with Nows, facilities should 1) identify experts for medical, nursing, and nutritional care for infants (if the expertise is not available locally, consultative availability should be coordinated with a facility providing a higher level of neonatal care); 2) define criteria for infant transfer or transport to a unit providing a higher level of care; and 3) identify appropriate community-based resources for parents and families.



* QI Review is a formal process to review cases of infants with symptoms who were not identified as "at risk". The process uses the Maternal Risk Identification QI Tool.

** Facilities can select the medication protocol used. At this time, no single protocol has been determined to be superior to any other. Medication protocols should include 1) indications for starting; 2) guidelines for adjusting doses, if necessary; and 3) guidelines for weaning or discontinuation.