

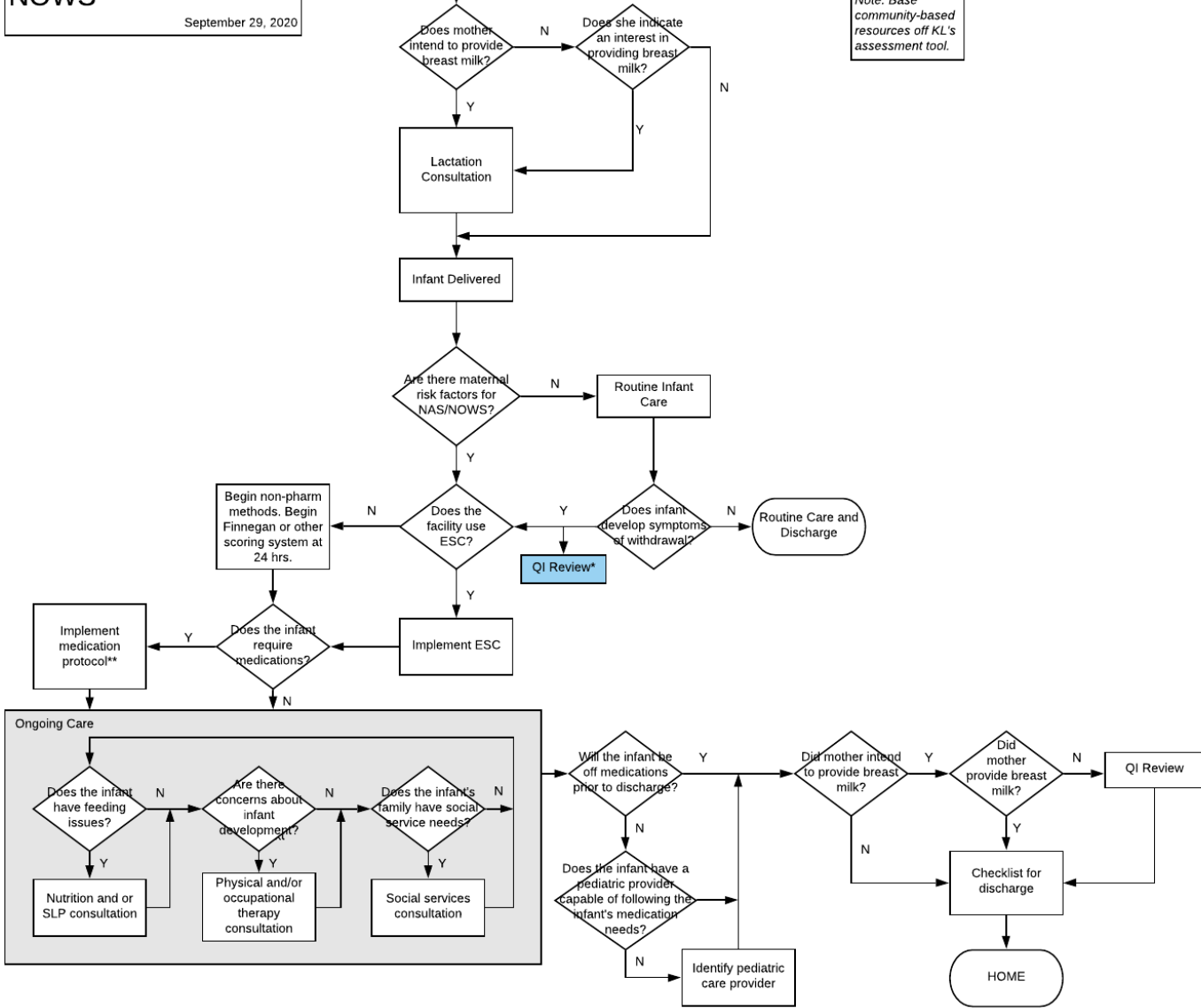
Standardized Algorithm for the Care of Infants at Risk for Nows

September 29, 2020

Pregnant woman admitted and screened for risk using risk assessment tool.

Preparation: Before providing care for infants with Nows, facilities should 1) identify experts for medical, nursing, and nutritional care for infants (if the expertise is not available locally, consultative availability should be coordinated with a facility providing a higher level of neonatal care); and 2) identify appropriate community-based resources for parents and families.

Note: Base community-based resources off KL's assessment tool.



* QI Review is a formal process to review cases of infants with symptoms who were not identified as "at risk". The process uses the Maternal Risk Identification QI Tool.

** Facilities can select the medication protocol used. At this time, no single protocol has been determined to be superior to any other. Medication protocols should include 1) indications for starting; 2) guidelines for adjusting doses, if necessary; and 3) guidelines for weaning or discontinuation.